

CenterScape

CenterScape is a flexible software framework, custom-designed for data center management, that enables advanced environmental monitoring and asset lifecycle management across the entire data center estate.

Features & Benefits

- ◆ Complete Asset Lifecycle Management: Continuous visibility of IT assets and conditions from purchase through deployment and retirement
- ◆ Improved Total Cost of Ownership: Protect your data center investments by ensuring IT assets deployed and utilized for 100% of their lifespan
- ◆ Intelligent Capacity Planning and Density Management: Accurate, real-time asset location and power utilization data to manage a truly data-driven data center
- ◆ Disaster Avoidance: Predictive analytics coupled with instant threat notification help you avoid downtime
- ◆ Increased Efficiency, Increased Savings: Reduce operational expenditures through enhanced power and cooling efficiency and deliver savings to the bottom line

What is CenterScape?

CenterScape is a flexible framework of data center infrastructure and asset management tools, custom-designed to match your unique data center needs to your business processes. Based on our award-winning workplace Internet of Things (IoT) platform, CenterScape provides a complete, end-to-end solution for real-time asset tracking, environmental monitoring and data center cost reduction.

With features not found in any other data center management software, CenterScape combines robust functionality with an intuitive, easy-to-use console. Industry-leading features include user customizable dashboards, 3D visualization, robust reporting, instant alerting and adaptive thresholding for predictive analytics.

Why is CenterScape Important?

CenterScape software reduces the total cost of ownership (TCO) of your data center, delivering real-time asset and environmental data

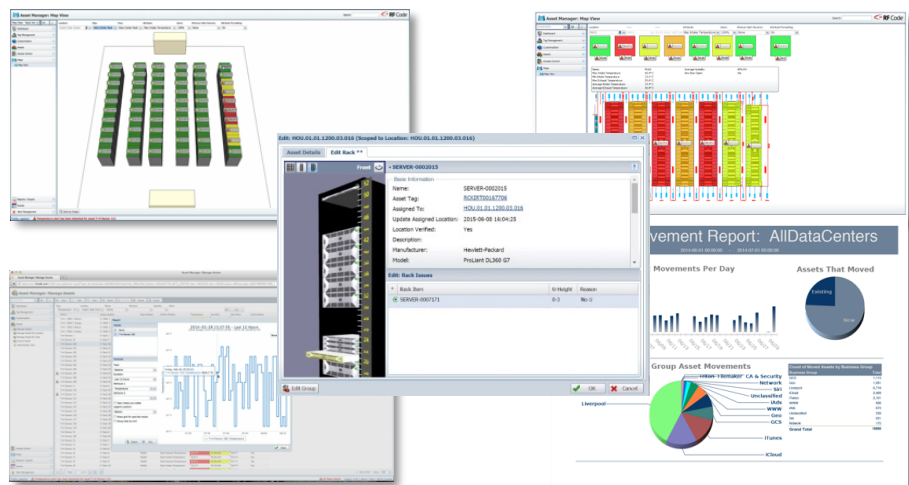
to a centralized console, enabling enterprises to scale their data center management capabilities globally.

CenterScape's continuous asset visibility capabilities enable complete asset lifecycle management and makes it simple to manage your data center assets from arrival through deployment to decommissioning.

Current and historical asset attributes such as financial data, physical location, environmental conditions and contractual information are fully visible, ensuring availability and disaster avoidance while providing significant cost and time savings.

For Whom is CenterScape Designed?

CenterScape was specifically designed for data center managers and executives who routinely monitor, manage and optimize data center assets and conditions.



Key Features:

CenterScape has powerful data center monitoring and management capabilities including:

- Real-time asset, environmental, power consumption, and power utilization data from network-attached assets such as servers, UPSs and rack-mounted PDUs
- Complete asset lifecycle management from onboarding to decommissioning
- Dynamically updated 2D and 3D rack visualizations including Map View, Table View and Dashboard View
- User-defined KPIs and custom dashboards
- Predictive analysis and adaptive thresholding
- Capacity management for identifying and reducing over-provisioning
- U-level location tracking/management
- Real-Time incident reporting
- Open architecture for easy integration into 3rd party API's or enterprise software
- Compliance and SLA monitoring

CenterScape Specifications

OPERATING SYSTEM SUPPORT

- 64-bit Windows 7
- 64-bit Windows 2008 Server
- 64-bit Windows 2012 Server
- 64-bit Red Hat Enterprise Linux (RHEL) 5.5 – 6.4
- 64-bit CentOS Linux 5.5 – 6.6
- 64-bit Oracle Linux 5.5 – 6.5 Databases Supported
- PostgreSQL version 8.3 (Preferred Version = 9)
- Microsoft SQL Server 2008 and SQL Server 2012
- IBM DB2 v9.7



9229 Waterford Centre Blvd. ♦ Suite 500
Austin, TX 78758

Tel: 512.439.2200 ♦ Fax: 512.439.2199
sales@rfcode.com ♦ <http://www.rfcode.com>

Copyright © 2015 RF Code, Inc. All Rights Reserved. RF Code and the RF Code logo are either registered trademarks or trademarks of RF Code Incorporated in the United States and/or other countries. All other trademarks are the property of their respective owners.

09/23/2015